



Magglingen – Biel/Bienne 2022

FISU WORLD UNIVERSITY CHAMPIONSHIP ORIENTEERING



17th – 21st August 2022

BULLETIN 3



WELCOME TO SWITZERLAND

Dear competitors, dear orienteering friends,

The Organising Committee warmly welcomes you to the 2022 FISU World University Championship Orienteering. We are happy that 28 nations have registered and we are looking forward to seeing you soon in Magglingen – Biel/Bienne. Since the release of Bulletin 1+2 the Organising Committee has been working hard on preparing everything for the Championship week in August. As promised the competition areas will show the variety of typical Swiss Mittelland terrain, a tricky Jura terrain and nice cities for urban orienteering as well. I'm sure you have already taken a short insight to the terrains on our website and maybe you are also following us on social media. Our map makers and course setters have done a great job. The maps with fair and challenging courses are ready to be printed soon. Are you ready, too? I wish you all a good preparation - stay healthy and tuned!

Jost Hammer

Vice President OC / Technical Director 2022 World University Championship Orienteering

Dear athletes, ladies and gentlemen

It's a great pleasure for me to welcome you to Magglingen. This is a historic location in terms of Swiss sports: The Confederation began promoting sport at the Magglingen sports centre in 1944, and orienteering races have been held regularly on our site at around 1,000 metres above sea level ever since. This sport has a tradition here. So we at the Federal Office of Sport FOSPO are even more delighted that we are now hosting the 22nd FISU World University Championship Orienteering. Together with the students here at the Swiss Federal Institute of Sport Magglingen SFISM, we are doing everything we can to make you feel at home at Switzerland's National Sports Centre.

I wish you every success in the competitions. Enjoy your stay in Magglingen, which offers the best views of the Swiss Jura Mountains. In good weather, you can see the whole of the Swiss Alps.

Matthias Remund

Director of the Federal Office of Sport

MAGGLINGEN – BIEL/BIENNE

MAGGLINGEN

Swiss sport knows Magglingen/Macolin as a unique centre for education. Under one roof you find the Federal Office of Sport (FOSPO) and it's most important and famous division, the Swiss Federal Institute of Sports Magglingen (SFISM). In Magglingen, national sports policy is shaped and developed, and national sports promotion programmes are evaluated, developed, and implemented. Courses and training centres are created, and services are provided through SFISM along with teaching, research and development in the sports sciences.

SFISM is the only university for sport in Switzerland, and all its staff are proud to be able to contribute to the advancement of Swiss sport. SFISM takes on sporting challenges and strives for optimum performance for the benefit of Swiss sport.



BIEL/BIENNE

Biel/Bienne is a city in the Swiss canton of Berne and lies at the north-eastern end of Lake Biel in the Mittelland (Seeland), between the Alps and the Jura mountains. Easily accessible within one hour and half by train from the airport of Zurich. Biel/Bienne is the regional and economic centre for the Seeland as well as for the Bernese Jura and parts of Canton Solothurn. It also has several universities of applied sciences and is therefore a university city. Biel is the most important centre of the Swiss watch industry, as it is known as the world's watch metropolis due to the headquarters of the Swatch Group and the Rolex production facility.

The city is characterised by a homogeneous new town, which was built in the 1920s according to the rules of the Bauhaus and New Building style, especially in the train-station neighbourhood, and by an excellently preserved old town with a medieval structure.



ORGANISERS

On behalf of the International University Sports Federation (FISU), the 2022 FISU World University Championship Orienteering will be organised by

- 2022 Championship Orienteering Organising Committee
- Swiss University Sports

in co-operation with

- impOLs, OL-Förderverein Oberraargau-Solothurn
- Federal Office of Sport FOSPO/Swiss Federal Institute of Sport Magglingen SFISM
- Swiss Orienteering

KEY PERSONS

Event Director/President OC	Fritz Aebi
Technical Director/Vice President OC	Jost Hammer
FISU Senior Executive Member	Verena Burk
FISU International Medical Committee Member	Peter Katzmaier
FISU Technical Committee Chair	Ola Kaberg (SWE)
IOF Technical Delegate	Szava Zsigmond (HUN)
National Event Adviser	Michael Eglin (SUI)

EVENT PROGRAMME

Monday, 15 August 2022 Arrivals and accreditation Free training First general technical meeting	SFISM Biel / Magglingen SFISM	10:00 – 19:00 10:00 – 18:00 20:00
Tuesday, 16 August 2022 Model events Free training	Langenthal / Gänsbrunnen Biel / Magglingen	 08:30 – 17:30 08:30 – 17:30
Wednesday, 17 August 2022 Free training Sprint distance (Competition #1) First start Flower ceremony Opening ceremony	Biel / Magglingen Biel Biel – Ringplatz	08:30 – 10:30 13:00 – 16:50 14:30 17:00 17:15 – 18:00
Thursday, 18 August 2022 Long distance (Competition #2) First start Flower ceremony Second technical meeting	Gondiswil SFISM	06:30 – 15:50 09:00 16:00 20:00
Friday, 19 August 2022 Sprint relay (Competition #3) Mass start Flower ceremony Medal ceremony (Competitions #1 - #3)	Langenthal SFISM	12:15 – 15:50 14:30 16:00 20:00
Saturday, 20 August 2022 Middle distance (Competition #4) First start Flower ceremony	Crémines / Corcelles	07:15 – 13:15 09:00 13:30
Sunday, 21 August 2022 Relay (Competition #5) Mass start men Mass start women Flower ceremony Medal ceremony (Competitions #4 and #5) and closing ceremony Banquet	Gondiswil SFISM SFISM	07:15 – 12:30 09:00 09:10 12:45 18:00 19:00 – 22:00
Monday, 22 August 2022 Departures		06:00 – 10:00

COMPETITION RULES

The FISU Regulations for World University Championships and the Competition Rules for the IOF Foot Orienteering events (valid from 1st January 2022) will be applied in the event.

PARTICIPANTS

Only competitors, who satisfy the following conditions may take part in a FISU World University Championship in 2022:

- Athletes must be a national of the country they represent;
- Athletes must be at least 18 and less than 25 years of age on January 1st in the year of the event; for 2022, athletes must be born between the 01/01/1997 and the 31/12/2004;
- Athletes must be students who are currently officially registered as proceeding towards a degree or diploma at a university or similar institute whose status is recognised by the appropriate national academic authority of their country;
- Athletes must be former students of the institutions mentioned above, who have obtained their academic degree or diploma in the year preceding the event.

Each country may enter a maximum of seventeen (17) persons of which twelve (12) competitors with maximum of six (6) males and six (6) females and five (5) officials.

Each country may enter in:

Long distance	four (4) males and four (4) females
Middle distance	four (4) males and four (4) females
Sprint distance	four (4) males and four (4) females
Relay	two (2) male teams of three (3) persons and two (2) female teams of three (3) persons
Sprint relay	one (1) team of two (2) female runners and two (2) male runners

REGISTRATION AND FEES

DEADLINES FOR ENTRIES AND PAYMENT

Individual entries Travel schedules of the delegations Media individual entries	By 17 th July 2022
Balance of participation fees	By invoice. At the latest upon arrival
Final confirmation of competitors	At 1 st General Technical Meeting

All the individual entries as well as travel schedules for each person should be filled in online, using FISU's online accreditation system at:

<https://accreditation.fisu.net/Pages/Home.aspx>

To facilitate travel arrangements the organisers encourage delegations to fill in their travel schedules AS SOON AS POSSIBLE.

PARTICIPATION FEES TO THE ORGANISING COMMITTEE (full board and event services)

- participation fee of € 70.00 per person per night
- extra officials will pay a participation fee of € 140.00 per person per night

28 nations have done their quantitative entry. We will send them the invoice to pay the participation fees. **A deposit of 25% has to be paid immediately!**

Fees must be paid to the following bank account:

WUC Orienteering 2022, Herzogenbuchsee
BIC (Swift): RBABCH22450
IBAN: CH80 0645 0600 2844 5267 3
Clearing: 6450

DEADLINES FOR ATHLETES' REGISTRATION

Athletes' names for each discipline must be entered at the latest at 12.00 hrs on the day before the respective competition! Registration at the event office.

VISA REQUIREMENTS AND TRAVEL DOCUMENTS ACCEPTED BY SWITZERLAND

The prerequisite for immigration into Switzerland is a valid passport or another travel document accepted by the Swiss authorities. For travellers from certain countries a visa or further documents are required. Please check with your embassy if you need visa permits.

For more information on visa requirements and travel documents accepted by Switzerland please visit:

<https://www.eda.admin.ch/eda/en/fdfa/entry-switzerland-residence/visa-requirements-application-form.html>

Please remember to start your visa application procedure in time!

COVID-19 MEASURES

Covid measures have been lifted in Switzerland on 2nd May: Nevertheless, measures to avoid spreading of the coronavirus may be enforced. If so, we will kindly ask all participants to follow these measures and restrictions. If necessary, additional information is presented in a Covid-19 Bulletin on our website.

INSURANCE

The organisers decline any liability that might occur through participation in 2022 FISU World University Championship Orienteering and trainings. Each person participates at her/his own risk and is responsible for her/his own insurance coverage (illness and accident).

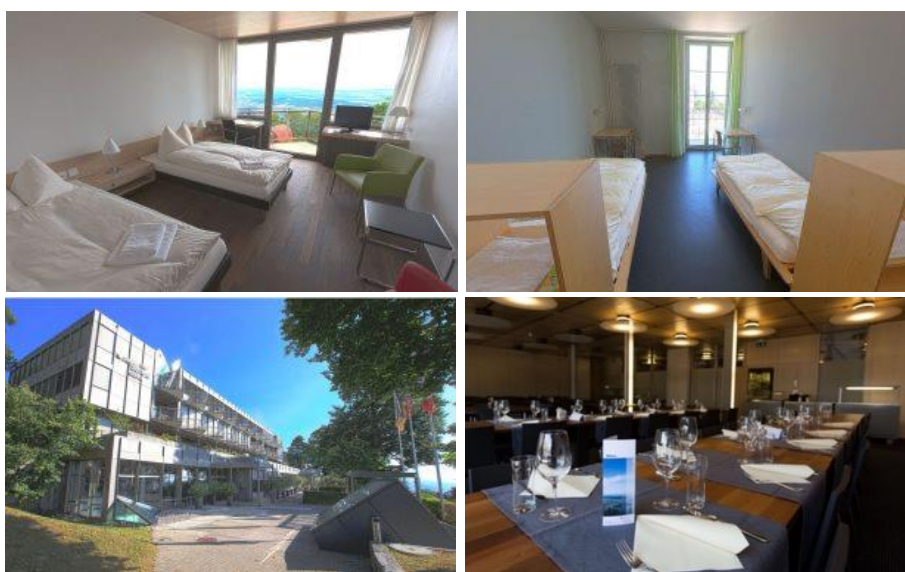
EVENT CENTRE MAGGLINGEN

The Event Centre/Athletes' Village of the Championship is located at the Swiss Federal Institute of Sport Magglingen (SFISM) campus area. The campus offers high standard accommodation, catering services, meeting rooms and sports facilities for all participants.

Both team officials' meetings, as well as the medal and closing ceremonies take place at the Event Centre.

The Athletes' Village will be open from Monday 15th - Monday 22nd August 2022.

There is no possibility to check in earlier at the SFISM. It is unfortunately fully booked the week before the championship. For assistance in finding accommodation before the championship please contact us as soon as possible by e-mail: info@wucorienteering2022.ch.



ACCOMMODATION

The SFISM offers 330 beds with hotel standard, which all are located within walking distance from the other SFISM services and facilities. All participants will be accommodated mainly in double rooms.

CATERING

During the championship week the Restaurant Bellavista offers daily breakfast, lunch and dinner for all participants, officials and guests. The cafés of the SFISM will be open during the championship as well.

On Tuesday, 16th August (model events), a packed lunch will be provided at breakfast time. On Thursday, 18th August, Saturday, 20th August, and Sunday 21st August, lunch will be served in the finish areas of the competitions.

ACCREDITATION

The accreditation office will be at the SFISM. All participants must obtain accreditation from FISU International Control Commission and from the Organising Committee (OC).

TRANSPORT

Public transport for arriving and departing participants will be arranged from/to **Zurich airport** (ZRH, 110 km) to Biel/Bienne and from there to Magglingen according to their arrival and departure schedules.

Upon arrival at **Zurich airport** delegations will get tickets for public transport to Magglingen at the **info point**. Info point is in the arrival's hall.

Please indicate as soon as possible, at the latest upon registration for individual entry on 17th July, if you DO NOT NEED a public transport ticket from the airport. This will apply for delegations travelling by private vans. Private vans may also be used on Tuesday, 16th August (model events).

All transport by buses on the competition days is provided by the organisers. In addition, all participants will get a public transport pass, valid for the whole week in Biel/Bienne and on the cable car Biel – Magglingen.

LOCAL WEATHER CONDITIONS

August	Average	Maximum	Minimum
Temperature (°C)	18.9	25.0	14.0
Precipitation (mm)	113		

INFORMATION AND MEDIA

The official website for 2022 FISU World University Championship Orienteering is online: www.wucorienteering2022.ch. On Facebook and Instagram you can find us by name: WUC Orienteering 2022.

Media representatives and any other official representatives are requested to register by contacting media@wucorienteering2022.ch.

DOPING CONTROLS

Doping controls will be organised during the championship by Swiss Sport Integrity / Antidoping Switzerland in accordance with the FISU and the IOF guidelines.

EMBARGOED AREAS

With reference to the Competition Rules for IOF Foot Orienteering Events, the listed areas are strictly out of bounds for all potential 2022 Championship Orienteering team members (competitors, team leaders, coaches, doctors etc.) and other persons who, through their knowledge of the terrain or the events, may influence the result of the competitions.

Offences must be reported to the Technical Director Jost Hammer by e-mail: technicaldirector@wucorienteering2022.ch

Copies of the most recent versions of the orienteering maps of the embargoed areas are published on our website www.wucorienteering2022.ch.



OVERVIEW MAP



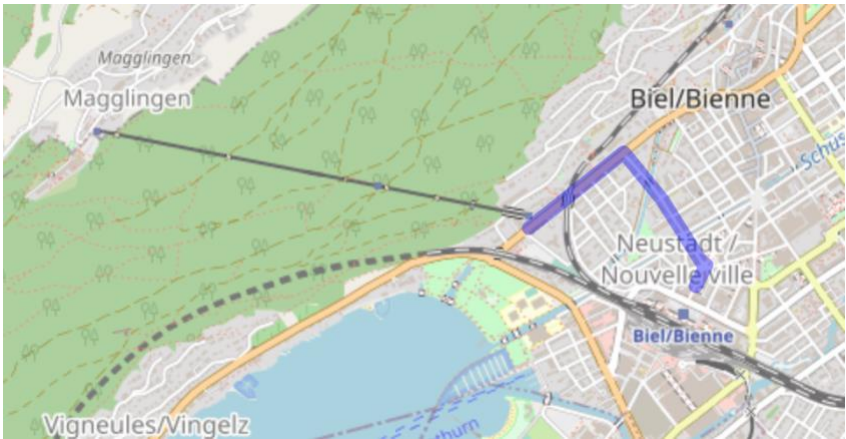
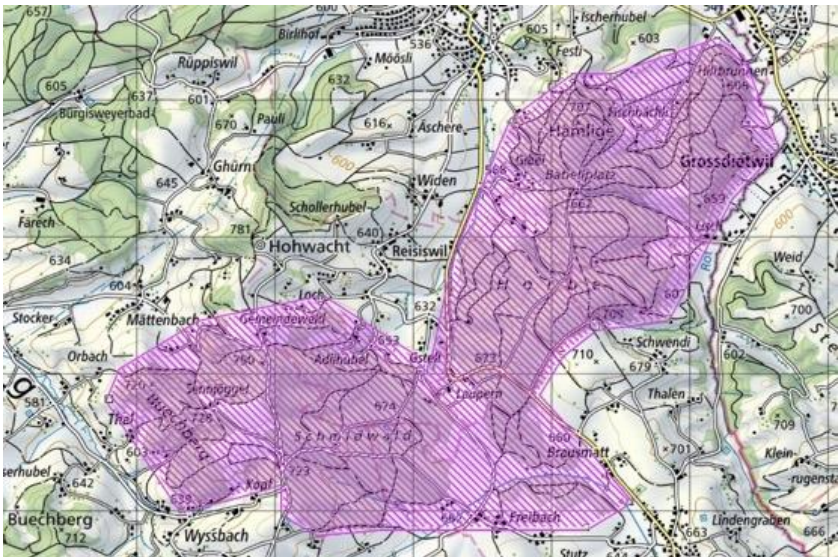
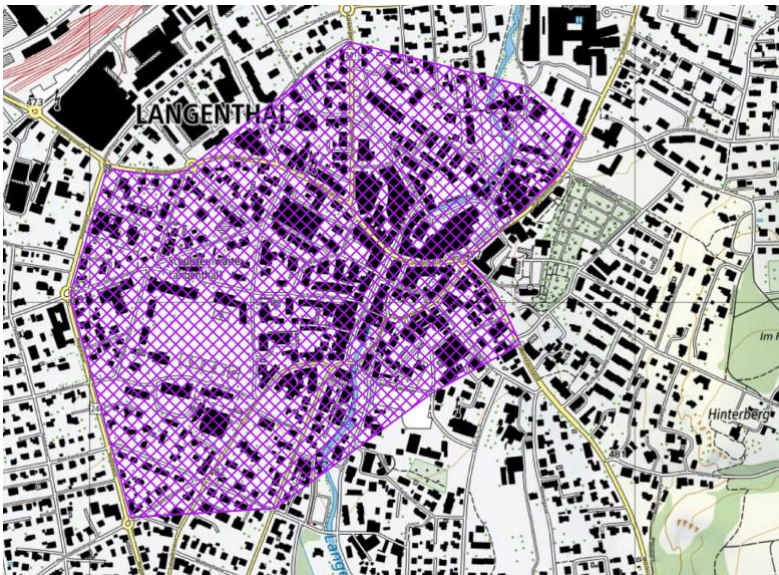
EMBARGOED AREAS AND PREVIOUS O-MAPS

Embargoed areas have been slightly reduced since bulletin 1+2. Please take note of this and make sure to follow the embargoed areas of this bulletin 3.

Check our website for the interactive map.

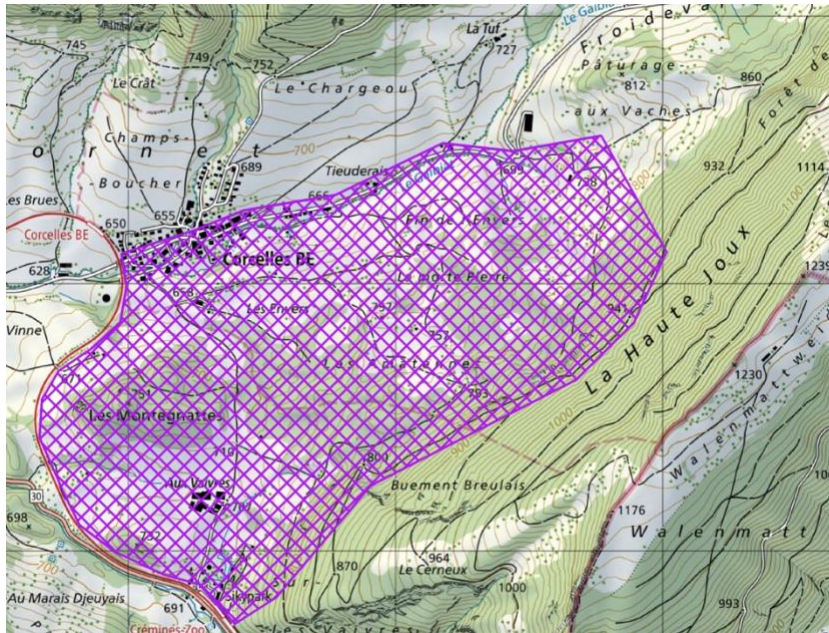
#	Area on the overview map	Previous O-maps (latest edition)
1.	Magglingen (Event Centre at SFISM)	
2.	<p>Biel/Bienne (Sprint Distance)</p>  <p>When travelling in Biel before the Sprint day (17th August) ONLY THIS ROUTE (marked purple) AND THIS BUS LINE ARE ALLOWED:</p> <ul style="list-style-type: none"> • Main road Solothurn – Neuchâtel; • A5 Solothurn – Biel/Bienne • National road #16 • Main road Bözingen – Leubringen/Evilard-Magglingen/Macolin 	No previous map

©swisstopo

	<ul style="list-style-type: none"> Bus #11 	
3.	Schmidwald-Horben (Long Distance and Relay) 	Schmidwald Horben (2009) 1 : 15'000 Schmidwald (2016) 1 : 10'000 ©swisstopo
4.	Langenthal (Sprint Relay) 	Stadt Langenthal (2014) 1 : 4'000 ©swisstopo

5. Corcelles (Middle Distance)

Corcelles (2016)
1 : 10'000



©swisstopo

EVENT INFORMATION

Sprint	
Format	Sprint distance, individual start, 1 minute interval
Map	"Biel/Bienne", 1:4000, 2m by Martin Howald
Terrain	Urban terrain with smaller and bigger buildings and park areas
Course length	Women: 2,8km, 20m climb, 18 controls. Men: 3,2km, 20m climb, 21 controls Estimated winning time for both women and men 13 minutes
Course setters	Philipp von Arx and David von Arx
Arena	Biel/Bienne, Ringplatz

Long	
Format	Long distance, individual start, 3 minutes interval
Map	„Schmidwald-Horben“, 1:15000, 5m by Ernst Kläy
Terrain	Between 600 and 750 m above sea level. Mostly coniferous forest. Hill sides with moderate to steep slopes. Some forest roads and hiking trails, varying vegetation on the ground. Runnability mostly good; visibility mostly good.
Course length	Women: 10,6km, 290m climb, 27 controls. Men: 13,9km, 470m climb, 34 controls Estimated winning time: for women 70 minutes, for men 80 minutes
Course setters	Reto Flückiger and Beat Zimmermann
Arena	Gondiswil

Sprint Relay	
Format	Sprint relay, mass start
Map	"Langenthal", 1:4000, 2m by Martin Howald
Terrain	Urban terrain with smaller and bigger buildings and park areas
Course length	Women 3,3km, 10m climb, 18 controls Men: 3,8km, 10m climb, 20 controls Estimated winning time: 4x 13 minutes
Course setters	Severin Howald and Joël Morgenthaler
Arena	Langenthal, Wuhrplatz

Middle Distance	
Format	Middle distance, individual start, 2 minutes interval
Map	"Corcelles", 1:10000, 5m by Urs Steiner
Terrain	Between 650 and 850 m above sea level. Coniferous forest with small semi-open to open Jura pasture. Hill side with moderate to steeper slopes. Some forest roads and hiking trails, no or moderate vegetation on the ground, rich in contour and rock details. Runnability mostly good, visibility good.
Course length	Women 4,2km, 270m climb, 19 controls Men: 5,1km, 300m climb, 22 controls Estimated winning time for both women and men 35 minutes
Course setters	Bettina Aebi and Marion Aebi
Arena	Crémines, Aux Vaivres

Relay	
Format	Relay, mass start
Map	„Schmidwald“, 1:10000, 5m by Ernst Kläy
Terrain	Between 600 and 750 m above sea level. Mostly coniferous forest. Hill sides with moderate to steep slopes. Some forest roads and hiking trails, varying vegetation on the ground. Runnability mostly good; visibility good.
Course length	Women: 3x 5,7km, 180m climb, 19 controls Men: 3x 7,2km, 230m climb, 24 controls Estimated winning time for both women and men 3x 35 minutes
Course setters	Beat Roth and Silje Ekroll Jahren
Arena	Gondiswil

Maps are drawn according to the International Specification for Orienteering Maps (ISOM 2017-2) and the International Specification for Sprint Orienteering Maps (ISSprOM 2019).

For more details and a short insight to the terrains see our website
www.wucorienteering2022.ch/competitions

PUNCHING

Touch free SPORTident Air+ punching (SIAC) will be used on all events. Participants are asked to use their own SIAC card during the Championship week. A limited number of rental cards will be provided by the organiser.

CLOTHING

According to the Swiss Orienteering Competition Rules it is forbidden to run with spike shoes in Switzerland. However, dobb spikes are allowed in forest races.

TRAINING OPPORTUNITIES AND TRAINING MAPS

MODEL EVENTS

Official model events on updated maps (spring 2022) will be organised on Tuesday, 16th August 2022. Maps: Langenthal "Rappenchopf" (relevant for Long distance and Relay) and Gänsbrunnen "Brunnersberg" (relevant for Middle distance).

Following the strict bus transport plan provided by the organisers all participants will have the opportunity to test both terrains. Delegations travelling by private vans are free to use their own vehicles.

In addition, all participants will get the map "Biel/Bienne-Strandboden", adjacent to the embargoed area (relevant for Sprint and Sprint relay). There are permanent control flags from Monday, 15th August 10.00 to Wednesday, 17th August 10.30. Access to the training area only by the Biel - Magglingen cable car!

FREE TRAININGS

Upon arrival all participants will get the two existing maps of the Campus area in Magglingen (1:10000 resp. 1:4000, both updated in May 2022). The permanent controls are at your disposal during the whole competition week.

TRAININGS PRIOR TO THE CHAMPIONSHIP

Other training possibilities in relevant terrain prior to the championship, "Martinsfluh Solothurn" (Middle and Long), "Grabenöli" (Long and Relay), "Kirchberg" and "Burgdorf" (Sprint and Sprint Relay).

Maps can be purchased laser-printed. Prices: Maps without controls € 3.00 per copy.

All enquiries about training opportunities should be addressed to the Technical Director Jost Hammer by e-mail: technicaldirector@wucorienteering2022.ch.

SWISS CHAMPIONSHIPS 2022

The Swiss Orienteering Championships Middle distance (MOM) and Relay (SOM) will be held on Saturday, 20th August and on Sunday, 21st August, right after the championship competitions. Entry can be done on <https://portal.ol-events.ch> For more information please visit www.wucorienteering2022.ch and/or www.mom2022.ch resp. www.som2022.ch.

CONTACT

Mail: info@wucorienteering2022.ch

Website: www.wucorienteering2022.ch

Fritz Aebi, Event Director, Mob +41 79 607 18 65,
eventdirector@wucorienteering2022.ch

Jost Hammer, Technical Director, Mob +41 79 415 71 58,
technicaldirector@wucorienteering2022.ch

Event Office at SFISM, open from Monday, 15th August, 09.00 hrs
Salome Weber, Mob +41 79 641 17 00

PRESENTING PARTNER

CREDIT SUISSE 

PARTNERS

AMMANN

die Mobiliar



OMEGA

BEVERAGE SPONSOR



SECURITY PARTNER



INSTITUTIONAL PARTNERS



sw!ss
orienteering



SWISSLOS
Sportfonds des Kantons Solothurn



stadtlangenthal



WELCOME TO SWITZERLAND AND 2022 FISU WORLD UNIVERSITY CHAMPIONSHIP ORIENTEERING!

